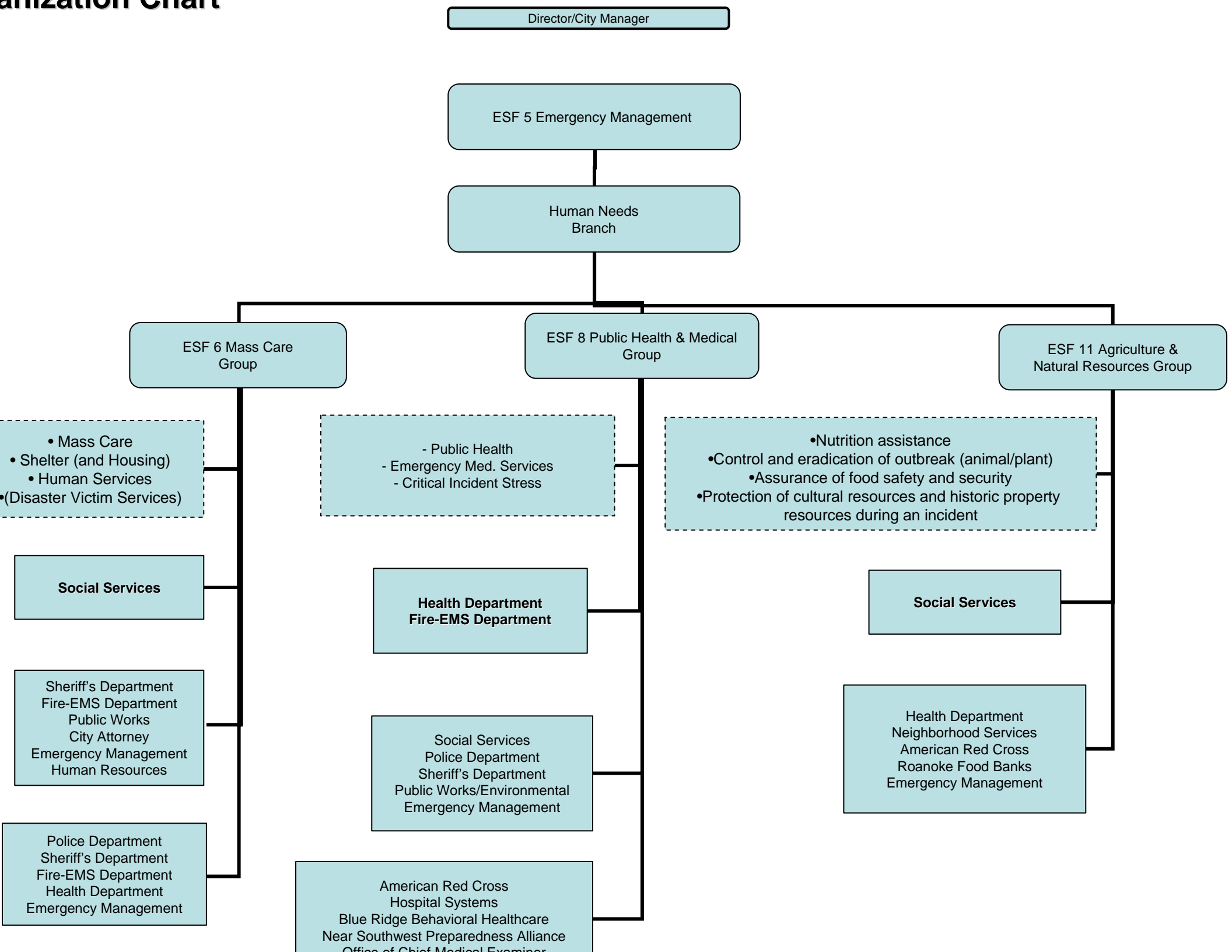
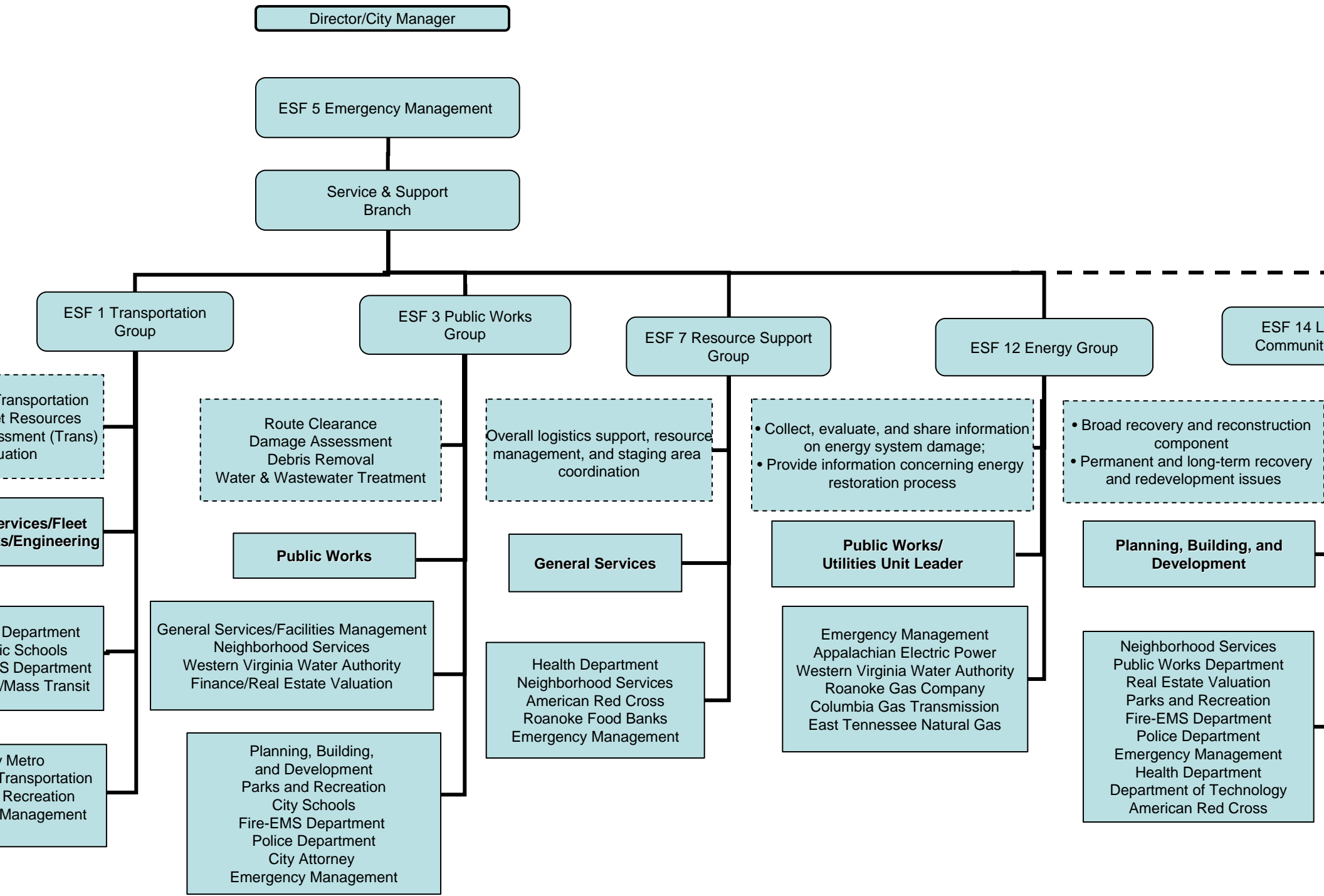


Organization Chart





Director/City Manager

ESF 5 Emergency Management

Service & Support Branch

ESF 1 Transportation Group

ESF 3 Public Works Group

ESF 7 Resource Support Group

ESF 12 Energy Group

ESF 14 L Community

Transportation Resources Assessment (Trans)

Services/Fleet Services/Engineering

Department of Schools, S Department, /Mass Transit

Metro Transportation Recreation Management

Route Clearance
Damage Assessment
Debris Removal
Water & Wastewater Treatment

Public Works

General Services/Facilities Management
Neighborhood Services
Western Virginia Water Authority
Finance/Real Estate Valuation

Planning, Building, and Development
Parks and Recreation
City Schools
Fire-EMS Department
Police Department
City Attorney
Emergency Management

Overall logistics support, resource management, and staging area coordination

General Services

Health Department
Neighborhood Services
American Red Cross
Roanoke Food Banks
Emergency Management

- Collect, evaluate, and share information on energy system damage;
- Provide information concerning energy restoration process

Public Works/
Utilities Unit Leader

Emergency Management
Appalachian Electric Power
Western Virginia Water Authority
Roanoke Gas Company
Columbia Gas Transmission
East Tennessee Natural Gas

- Broad recovery and reconstruction component
- Permanent and long-term recovery and redevelopment issues

Planning, Building, and Development

Neighborhood Services
Public Works Department
Real Estate Valuation
Parks and Recreation
Fire-EMS Department
Police Department
Emergency Management
Health Department
Department of Technology
American Red Cross

Organization Chart

